



Raptor+



GLUNZ & JENSEN 

work positive

COMPACT. RELIABLE. EASY TO USE.

The Raptor+ processor is the ideal processing solution for any medium segment printers.

The Raptor+ processor offers many of the same features and benefits as the InterPlater HDX in a smaller footprint, targeting customers in the medium segment. This means that Raptor+ offers a high level of configuration flexibility and can be adapted to a wide range of applications, to better match the individual needs of the printer.

It is prepared for full unattended operation and can be used in an automated prepress line, fully integrated with both CtP and post processor plate automation. Raptor+ combines reliability, flexibility and automation to meet the needs of any customer in the medium segment.

Customers looking for high productivity or high production volume, should consider the InterPlater HDX.



Raptor+ Thermal

For traditional thermal plates with developer, wash, gum and dryer steps.



Raptor+ Polymer

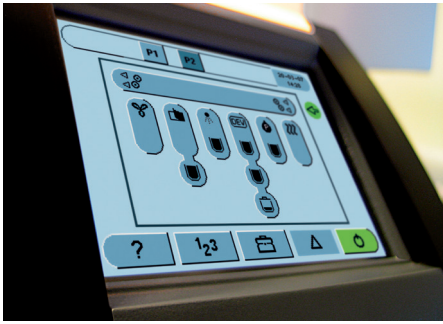
For violet photopolymer plates with pre-heat, pre-wash, developer, wash, gum and dryer steps. Very accurate hot-air preheat concept. Easily converted for violet chem-free technology.



Raptor+ Chemfree

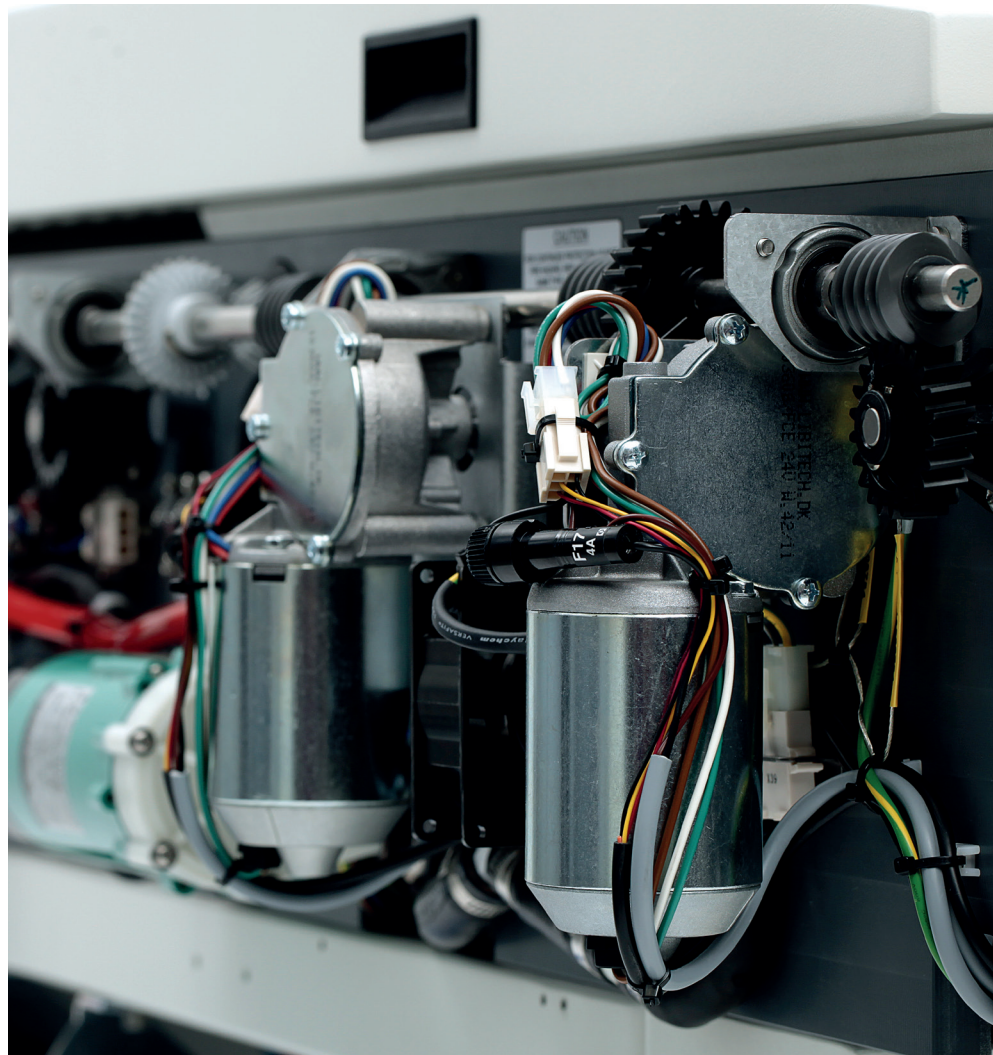
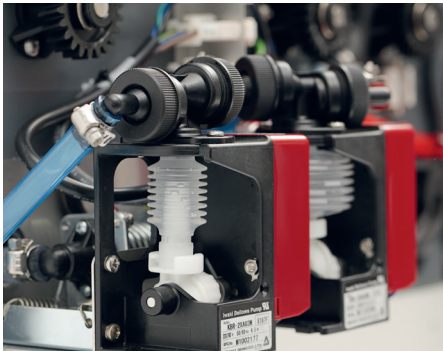
For violet chemfree applications. Dedicated models for Agfa N94-VCF and Kodak Libra VP applications. Alternatively, use the traditional photopolymer processor with appropriate modification kit.





Easy to operate graphic touch screen with logical menu. Optional native language plug-in and built-in remote support and diagnostics.

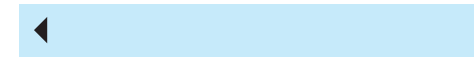
Replenishment is precisely calculated based on processed square meters and time, maintaining stable, waste-free processing.



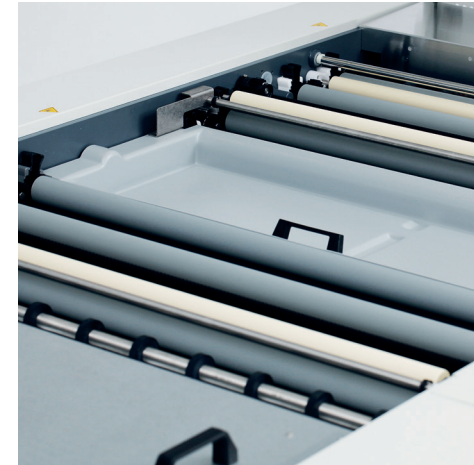
Easy-lift top covers provide good access to the inside of the processor.

The electronics are conveniently located on the side of the processor.

The filter is conveniently mounted under the frame, giving easy access. Extra space under the processor can be used to place chemistry containers

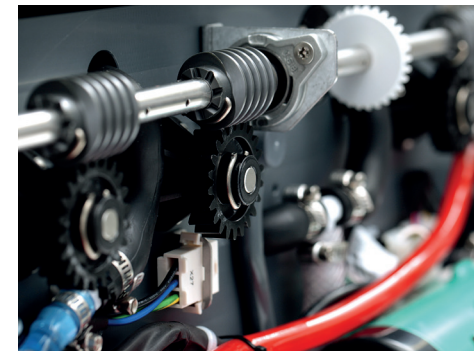


All electrical and mechanical components are located on the sides of the processor, for easy and convenient access during maintenance.



Rollers and brushes are mounted with snap lock bearings, so they can be instantly replaced without tools or the need to re-calibrate pressure.

Maintenance-free worm gears drive the rollers and provide smooth and trouble-free plate transport inside the processor.



	Raptor+ T	Raptor+ P	Raptor+ Chemfree
MODEL	85	85	85
PERFORMANCE			
Market position	Medium capacity	Medium capacity	Medium capacity
Plate types	Thermal plates	Violet photopolymer plates or Violet chemfree plates with Chemfree Conversion kit	Violet chemfree plates
Plate width (max)	850mm (33.5")	850mm (33.5")	850mm (33.5")
Plate length (min)	274mm (10.8")	274mm (10.8")	274mm (10.8")
Plate thickness	0.15-0.3mm (0.006-0.012")	0.15-0.3mm (0.006-0.012")	0.15-0.3 mm (0.006-0.012")
Processing speed	40-140cm/min (15.7-55.1"/min)	40-140cm/min (15.7-55.1"/min)	40-140cm/min (15.7-55.1"/min)
CONSUMPTION			
Tank capacity (developer)	22 l (5.8 US gal)	22 l (5.8 US gal)	22 l (5.8 US gal)
Temperature range (pre-heat)	N/A	70-140 °C (158-284 °F)	70-140 °C (158-284 °F)
Temperature range (developer)	20-40 °C (68-104 °F)	20-40 °C (68-104 °F)	20-34 °C (68-93 °F)
Water (draining)	16 l/min (4.2 US gal/min)	32 l/min (8.4 US gal/min)	N/A
Water (recirculating)	0.2 l/m ² (0.8 US gal/m ²)	0.7 l/m ² (2.7 US gal/m ²)	N/A
Power (stand-by)	0.06kW (200BTU/hour)	1.2kW (4,000BTU/hour)	1.1kW (3,600BTU/hour)
Power (operate)	1.8kW (6,000BTU/hour)	3.6kW (12,000BTU/hour)	2.6kW (8,870BTU/hour)
GENERAL			
Dimensions (LxWxH)	115 x 126 x 101-110cm (45.3 x 49.4 x 39.8-43.3")	195 x 126 x 101-110cm (76.8 x 49.4 x 39.8-43.3")	130 x 126 x 101-110cm (51.2 x 49.4 x 39.8-43.3")
Weight	235kg (518lbs)	307kg (677lbs)	234kg (514lbs)
Approvals	UL, c-UL certified. Complies with CE standards and RoHs directive.		
Standard	Configured for typical applications in developer, Automatic container level alarm, Universal front panel, World-wide electrical configurable, Graphical finger touch control panel, Cooling unit, standard capacity 50/60 Hz, Hand shower for easy cleaning, WEBCONNECT		
Accessories	Closed stand, Drip tray, Delivery table (L = 710 mm), Feed table (L=400 mm), Dedicated application configuration kits, Online interfaces for CtP, Remote Enabling System, Water saving, USB Memory stick, Stackers		

Note: Specifications are subject to changes without prior notice.



Preventive Maintenance Kits are available for this product to maximize production uptime.

Learn more about Raptor+ by scanning this QR code.



Glunz & Jensen (Headquarters)
 Selandia Park 1
 4100 Ringsted, Denmark
 +45 5768 8181
 gj@glunz-jensen.com

Glunz & Jensen (Ringø)
 Nordmarken 2
 5750 Ringø, Denmark
 +45 6262 4165
 gj@glunz-jensen.com

Glunz & Jensen (Milan)
 Via Alessandro Volta 28
 20088 Rosate (MI), Italy
 +39 02 900 90 180
 gj@glunz-jensen.com

Glunz & Jensen (Americas)
 500 Commerce Drive
 Quakertown, PA 18951, USA
 +1 267 405 4000
 gj-americas@glunz-jensen.com

Glunz & Jensen (Asia)
 Suzhou, 215129
 P.R. China
 + 86 136 1291 5142
 gj@glunz-jensen.com

Glunz & Jensen Thetford
 Unit 4-6, Napier Place
 Stephenson Way Industrial Estate
 Thetford, Norfolk, IP24 3RL, UK
 +44 1842 765128
 gj@glunz-jensen.com