

NX WIDE

VERSATILE,
HIGH-QUALITY
IMAGING

Efficient large-format plate production

The **Kodak Flexcel NX Wide System** delivers exceptional image quality and offers a compact footprint, enhanced edge detection features for media handling and a streamlined installation process. With a maximum plate size of 42 x 60 inches (1067 x 1524 mm) the **Flexcel NX Wide System** accommodates large layouts and facilitates efficient job planning, while producing **Kodak Flexcel NX Plates** that enable print production efficiencies and outstanding print quality.

In addition to the **Flexcel NX Thermal Imaging Layer**, the device offers full compatibility for **Kodak DITR Film** imaging and an opportunity to add a Hybrid Option for digital offset plate imaging.

Versatile, high-quality imaging

Building on our success and expertise in thermal CTP technology, the **Kodak Flexcel NX Wide-C Imager** utilizes the same award-winning **Kodak SQUAREspot Imaging Technology** common to all **Kodak Flexcel NX Imagers**. **SQUAREspot Imaging Technology** delivers exceptional quality, productivity and consistency.

The imager creates a mask for plate making—imaging the **Kodak Flexcel NX Thermal Imaging Layer** at an impressive speed—and features user-friendly semi-automatic loading and unloading.

Do more with less

The fine image reproduction, print contrast and high densities delivered by the **Flexcel NX Wide System** allow prepress service providers and converters to compete for business traditionally beyond the capabilities of flexo, enabling print buyers to take advantage of both the flexibility and cost-effectiveness of flexo and the quality they would normally expect from offset, gravure or digital printing.

In addition, **Flexcel NX Plates**—with enhanced ink transfer capabilities and high-resolution, flat-top dot structure—enable print efficiencies that include faster start up times, reduced waste and longer plate life. Plate surface texturization enabled by **Kodak DigiCap NX Patterning** means that customers can expect higher densities, a wider color gamut and improvements in combination plate utilization, opening up the opportunity to reduce the number of plates required per job.

A complete solution

Kodak combines expertise in digital imaging technology and materials science to bring you more than individual components; the **Flexcel NX Wide System** is a full solution for digital flexo that includes software, imager, plate making processes and plate materials. All components of the system are optimized to work efficiently together, bringing you best-in-class capabilities for high-definition flexo printing.

In addition, when integrated with **Kodak Insite Portal Products**, **Kodak Prinergy Workflow** and the **Kodak Spotless Flexographic Solution**, the **Flexcel NX Wide System** forms part of a complete **Kodak Solution** that delivers high quality, efficiency and automation to packaging prepress service providers and printers.

Completely integrated turnkey solution



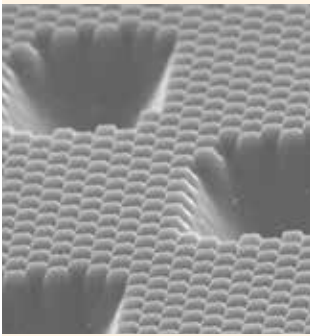
Kodak Flexcel NX Wide-C Imager

The **Flexcel NX Wide-C Imager** enables plate making up to 42 x 60 inches, with a compact device footprint. Like all other imagers in the family, the **Flexcel NX Wide-C Imager** utilizes proven **Kodak SQUAREspot** Imaging Technology to deliver exceptional image quality.



Kodak Flexcel NX Wide Laminator

The **Flexcel NX Wide Laminator** is used to laminate the Thermal Imaging Layer to the **Flexcel NX Plate** prior to exposure and processing. While quick and simple, the lamination stage is critical because it removes all oxygen between the mask and the plate, allowing the creation of full-amplitude flat top dots.

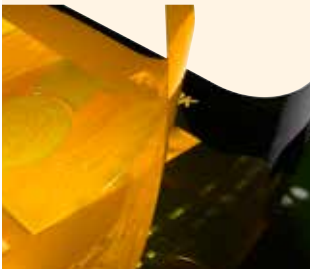


Kodak TIFF Front End Software

Powerful **Kodak TIFF Front End Software** drives the **Flexcel NX Imager** and allows operators to preview and inspect files for accuracy before imaging, and optimize media usage by arranging multiple separations on a single plate. The result is outstanding device control and job management, fast processing speeds and simplicity of operation.

Kodak DigiCap NX Patterning

Award-winning **Kodak DigiCap NX Patterning** is implemented in the **Kodak TIFF Front End**. It utilizes the high-resolution capabilities of the **Flexcel NX System** to create a micro-texturization pattern on the surface of all plate elements, significantly boosting ink transfer efficiency.



Kodak Flexcel NX Thermal Imaging Layer

The unique formulation of the **Flexcel NX Thermal Imaging Layer** allows high resolution and fast imaging, and intimate optical contact with the plate during UV exposure.

Kodak Flexcel NXH Plates

Flexcel NX Plates are reliable, high-quality flexographic plates designed to print on a wide variety of substrates. They offer superior ink transfer, smooth solids, uniform laydown, robust on-press performance and excellent ozone resistance.

Accessories:



Densitometer

The X-Rite 361T UV densitometer, supplied as a standard accessory with every **Flexcel NX Wide System**, is a valuable tool for imaging set-up, troubleshooting and quality control.



Media Rack

A convenient mobile media rack, designed to be placed adjacent to the **Flexcel NX Wide-C Imager**, ensures that sheets of Thermal Imaging Layer are close at hand when required for loading.



Rolling Plate Cart

A tilting rolling cart facilitates the safe transportation of wide format plates between lamination, exposure and processing stations.

Kodak Flexcel NX Wide System specifications

Kodak Flexcel NX Wide-C Imager

Physical characteristics

Imager dimensions (H x W x D)	120 x 254 x 181 cm (47.2 x 100 x 71.3 in) Loading table height: 83 cm (33 in)
Debris removal cabinet (UDRC)	88 x 63 x 54 cm (35 x 25 x 21 in)
Weight	Imager: 990 kg (2183 lb) UDRC: 68 kg (150 lb)

Workflow specifications

Workflow connectivity	Kodak TIFF Front End Software Optional: Kodak Prinergy Workflow System
-----------------------	-----------------------------------------------------------------------------------------

Specifications for imaging Kodak Flexcel NX Thermal Imaging Layer (TIL)

Throughput (includes loading and unloading)*	<p>With DigiCap NX Patterning applied: Imaging rate: 13.0 m²/hr 6.0 wide sheets per hour 10.0 mid sheets per hour 12.5 narrow sheets per hour</p> <p>Without DigiCap NX Patterning applied: Imaging rate: 10.0 m²/hr 4.5 wide sheets per hour 8.0 mid sheets per hour 10.0 narrow sheets per hour</p>
Media sizes	640 x 838 mm (25.2 x 33 in), to make 610 x 762 mm (24 x 30 in) plate 838 x 1097 mm (33 x 43.2 in), to make 800 x 1067 mm (31.5 x 42 in) plate 940 x 1230 mm (37 x 48 in), to make 900 x 1200 mm (35.4 x 47.2 in) plate 1097 x 1554 mm (43.2 x 61.2 in), to make 1067 x 1524 mm (42 x 60 in) plate
Resolution	2400 dpi
Repeatability	± 8 microns between 2 consecutive exposures on the same TIL left on the drum
Screening	300 lpi maximum linescreen (0.4% to 99.6%) Kodak DigiCap NX Patterning Kodak Maxtone Screening and Kodak Maxtone CX Screening Kodak HyperFlex Ready Imaging Technology Kodak Staccato Screening

Specifications for imaging Kodak DITR 4401 Film

Throughput (includes loading and unloading)**	<p>Imaging rate: 10.5 m² per hour 5.0 sheets per hour 1097 x 1554 mm DITR (43.2 x 61.2 in) 9.0 sheets per hour 838 x 1123 mm DITR (33 x 44.2 in) 12 sheets per hour 600 x 750 mm DITR (23.6 x 29.5 in)</p>
Media sizes	600 x 750 mm (23.6 x 29.5 in) 838 x 1123 mm (33 x 44.2 in) 1097 x 1554 mm (43.2 x 61.2 in)
Repeatability	± 8 microns between 2 consecutive exposures on the same film left on the drum
Resolution	2400 dpi
Screening	200 lpi maximum linescreen (2% to 98%)

* Maximum imaging rate is based on 1230 mm media around the drum. Maximum productivity for continuous operation with 15 seconds/cycle operator time.

** Maximum imaging rate is based on 1123 mm media around the drum. Maximum productivity for continuous operation with 15 seconds/cycle operator time.

The platesetter is a Class 1 Laser Product and fully complies with EN60825-1 and US Federal Regulations 21 CFR 1040.10 - CDRH.

Kodak Flexcel NX Wide System specifications (continued)

Specifications for imaging 830 nm thermal imaging IR digital offset plates with Hybrid Option

Throughput *** (by plate size mm)	813 x 1030	1325 x 1630
Plates per hour:		
F-speed	12	8
X-speed	22	15
Repeatability	± 8 microns between 2 consecutive exposures on the same plate left on the drum	
Accuracy	± 35 microns (1.4 mil) between 2 plates imaged by different devices	
Registration	25 microns (1.0 mil) between image and edge at registration points	
Media thickness	0.20 - 0.40 mm (0.008 - 0.016 in)	
Media sizes	<i>Around drum dimensions:</i> Min. 394 mm (15.5 in), Max. 1325 mm (52 in) <i>Along drum dimensions:</i> Min. 394 mm (15.5 in), Max. 1630 mm (64 in)	
Screening	450 lpi max. linescreen 20 micron Kodak Staccato Screening	

*** Maximum productivity for continuous operation with 15 seconds/cycle operator time and Kodak qualified media with 110 mJ per cm² sensitivity. Imaging time is dependent on media sensitivity and qualified screening. Consult your Kodak representative for specific media information.

Kodak Flexcel NX Wide Laminator

Dimensions (H x W x D)	87 x 273 x 133 cm (34 x 107 x 52 in), Table height: 81 cm (32 in)
Weight	700 kg (1540 lb)
Supported plate sizes	610 x 762 mm (24 x 30 in) 800 x 1,067 mm (31.5 x 42 in) 900 x 1200 mm (35.4 x 47.2 in) 1067 x 1524 mm (42 x 60 in)

Kodak Flexcel NX Wide System

Operating conditions

Temperature	17°- 30°C (63°- 86°F)
Humidity	40%- 60% relative humidity, non-condensing

To learn more about solutions from Kodak:
Call +1-866-563-2533 in North America

Produced using **Kodak** Technology.

Eastman Kodak Company
343 State Street
Rochester, NY 14650 USA

©Kodak, 2016. TM: Kodak, DigiCap, Flexcel, Hyperflex, InSite, Maxtone, Prinergy, Spotless, SQUARESpot, and Staccato.

Subject to technical change without notice.

U.FLX.142.0116.en.05 (K-543)

LEARN MORE AT
KODAK.COM/GO/FLEXCELNX

